

Data Sheet

Wacom Ink SDK for verification

*Signatures
you can
trust*



WACOM® for Business

Wacom Ink SDK for verification

Signatures you can trust



Verify handwritten electronic signatures with up to 99% accuracy* at the point of signing, or after the fact.

Handwritten signatures are still the most familiar and meaningful way to confirm big decisions or approve important transactions.

But visual inspections of signatures to assess their authenticity are often performed by laymen. These inspections are 13 times more likely to result in errors than inspections carried out by Forensic Document Examiners.

Wacom Ink SDK for verification eliminates the uncertainty by providing a fast, reliable way to verify signatures in customer-facing environments, or flag suspicious signatures after the fact during as part of daily risk management processes.

Product Overview

Wacom Ink SDK for verification is a set of software tools for verifying the authenticity of handwritten signatures. The SDK's verification engine enables signatures to be verified in two ways.

- Dynamic verification of a signature by comparison with up to 3-12 reference signatures
- Static verification after the fact by comparing images of a recent signature with images of known recent examples.

The SDK is the only solution that enables both types of verification within a single product. They can be used either independently or in combination.

wacom®
Ink SDK

* Wacom Ink SDK for verification has been proven in tests to deliver verification accuracy of up to 99%. For more information, download the Accuracy Report: wacom.com/verification-sdk

How it works

The SDK is easy and fast to integrate within an organization's document management system. After a new signature has been provided, the SDK's verification engine checks it against typically 6 reference examples stored in a database.

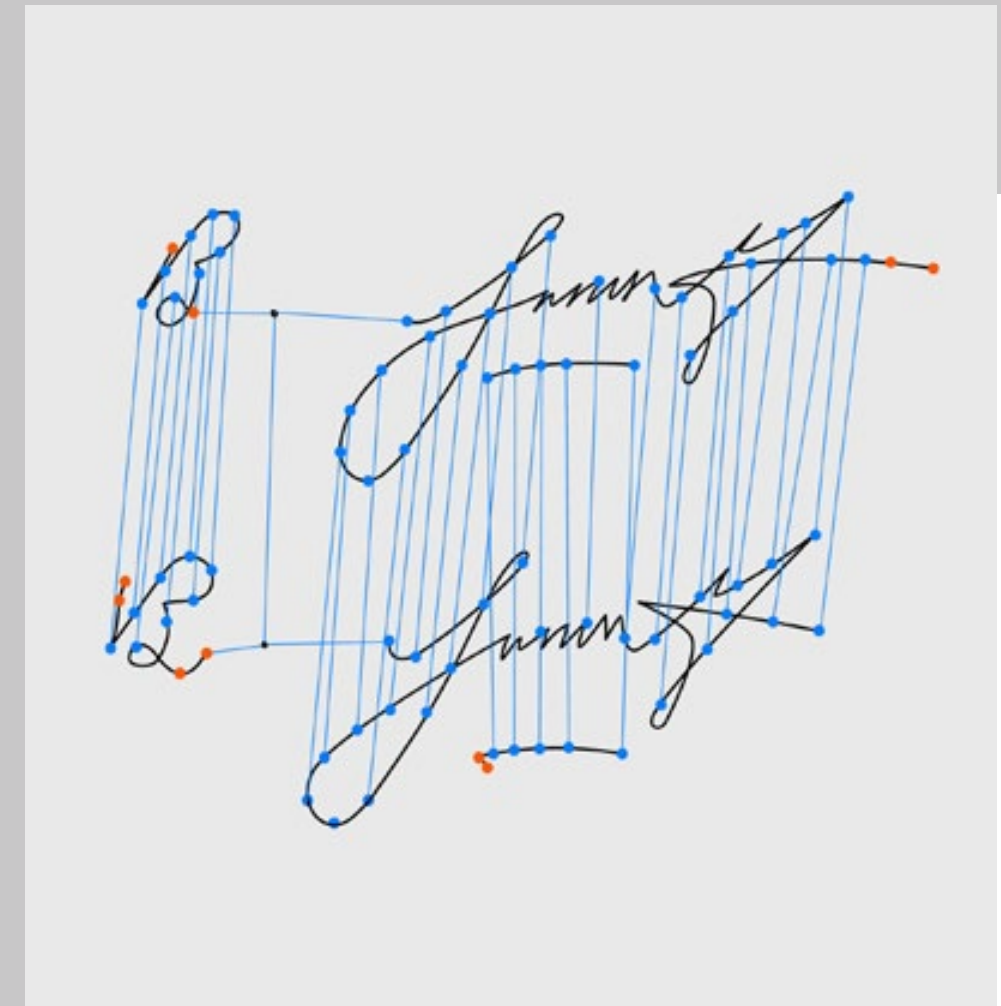
These reference signatures can be enrolled (captured) progressively in a template over multiple sessions, or within a single session. This template can be updated over time.

Progressive signature enrollment takes longer but is more accurate since there is likely to be more variance between the genuine signatures over time.

Session signature enrollment is faster but less accurate because there is little variance between signatures when captured in quick succession.

After the comparison of a new signature with the known reference examples, the verification engine generates a simple, highly accurate and instant acceptance or rejection message. It's built to favor a low false rejection rate to ensure maximum security. But organizations have the flexibility to select the tolerances the engine uses to accept or reject signatures.

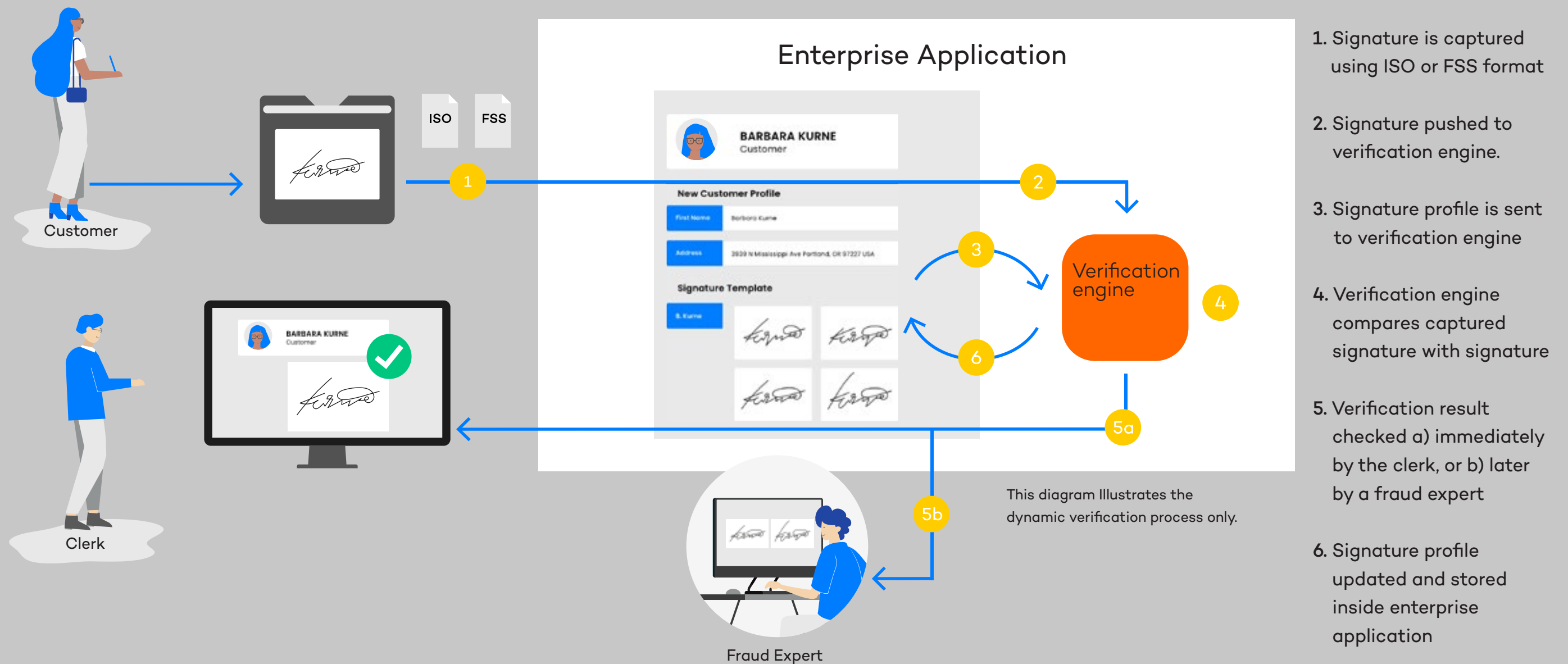
Importantly, the software does not store any signature data, eliminating the compliance problems that can affect server-based solutions.



Wacom Ink SDK for verification

Sample workflow, financial services

Many transactions still require a handwritten signature for authorization. This example shows how Wacom's signature verification technology helps banks clerks and fraud prevention Teams spot fake signatures.



Verification with Wacom

Why it works better



What makes Wacom's solution unique?

Wacom's approach to signature verification is built on decades of expertise in developing handwritten eSignature hardware and software. Its key capabilities are listed below.

1. The SDK provides a straightforward migration path from scanned paper-based signatures to a fully digital handwritten eSignature solution.
2. It supports real-time digital and image-based signature comparison in a single solution.
3. It's compatible with Wacom devices and all third-party hardware that generates handwritten eSignatures using the Wacom Ink SDK for signature.
4. It enables verification starting with a single signature and allows comparison with up to six reference signatures captured over time, or in a single session.
5. It is optimized for two scenarios: unauthorized individuals faking a signature, and genuine signatories disguising their own signature.
6. It mitigates compliance risks because no data is stored by the SDK, unlike server-based alternatives.



Fast, simple integration

The Wacom Ink SDK for verification is a lightweight SDK that enables fast, easy integration with existing applications and infrastructure. It can be deployed either on a windows server or inside a Java web application.

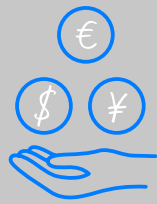
It's compatible with any type of application such as a CRM system that can store a signature file, and any hardware that captures handwritten eSignatures in ISO format.

Unlike alternative solutions that require their own proprietary server infrastructure, the Wacom Ink SDK for verification is installed on the customer's own server, and is called by the relevant application via an API.

All captured eSignatures and data are also stored on the customer's server, and not by the SDK. This eliminates many potential compliance risks or data privacy issues.

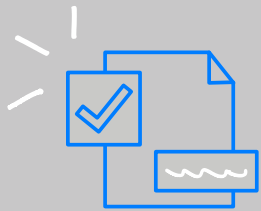
Use Cases

In real-time at the point of signing, or in the back office during daily risk management processes – Wacom Ink SDK for verification helps prevent handwritten signature fraud.



Financial Services

Verifying identities for significant transactions such as mortgage contracts or large cash withdrawals in real time, or checking their validity during fraud investigations.



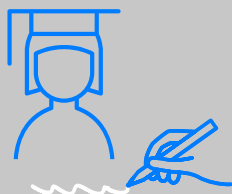
Public Sector

Preventing election fraud by verifying that postal votes in an election have only been completed and submitted by eligible citizens.



Healthcare

Protecting the authority of senior medical staff to approve specific procedures or medications, according to compliance requirements.



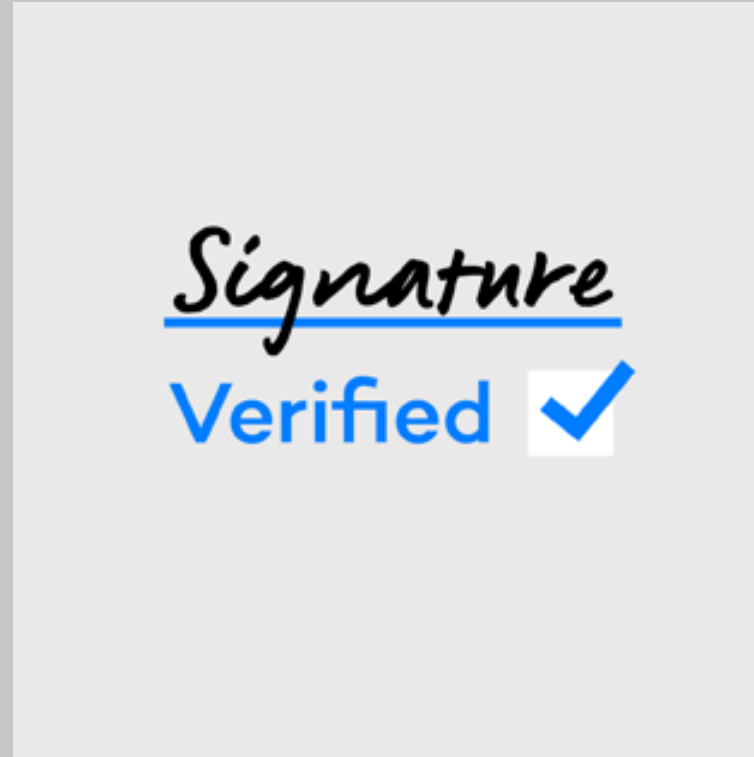
Education

Confirming the identity of students when they arrive at examination centers to take important tests.



Hospitality

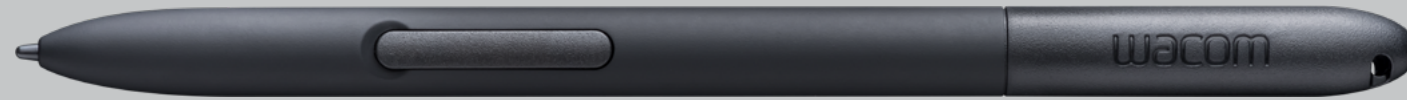
Avoiding the theft of valuable goods by confirming authorized acceptance of deliveries at restaurants, etc.



Your business opportunity

The Wacom Ink SDK for verification enables you to add a new, unique layer of value to your existing handwritten eSignature solutions, no matter which hardware or enterprise systems your customers use.

More human



More digital



Japan (HQ)

For more information please contact:

Wacom Co., Ltd. · Sumitomo Fudosan Shinjuku Grand Tower 31F, 35F,
8-17-1 Nishi-Shinjuku, Shinjuku-ku, Tokyo 160-6131, Japan
vm-info@wacom.co.jp · 03-5337-6706



Americas

For more information please contact / Pour de plus amples informations,
veuillez contactez / Para obtener información adicional, póngase en contacto
con: Wacom Technology Corporation · 12121 NE 99th Street, Suite 2140,
Vancouver, WA 98682 USA
esign@wacom.com · 1-503-525-3100



Europe, Middle East and Africa

For more information please contact / Pour de plus amples informations,
veuillez contactez / Para obtener información adicional, póngase en contacto
con: Wacom Europe GmbH · Zollhof 11-15, 40221 Düsseldorf, Germany
solutions@wacom.eu · +49 211 385 48 0



China (Mainland)

For more information please contact:

Wacom China Corporation · 518, West Wing Office, China World Trade Center,
No. 1 Jianguomenwai Avenue, Chaoyang District, Beijing 100004, China
WW@wacom.com · 400-810-5460

Hong Kong

For more information please contact:

Wacom Hong Kong Ltd. · Office 107G, 17/F, Tower I, Grand Century Place,
193 Prince Edward Road West, Mong Kok, Hong Kong, China
e-signature@wacom.com · +852 2573 9322



Australia

For more information please contact:

Wacom Australia Pty. Ltd. · Ground floor, Building 1, 3 Richardson Place,
North Ryde, NSW, 2113, Australia
Contactapbs@Wacom.com · +61 2 9422 6730

Korea

For more information please contact:

Wacom Korea Co., Ltd. · Rm #1211, 12F, KGIT Sangam Center, 402 Worldcup
Bukro, Mapo-gu, Seoul 03925, Korea
Contactapbs@Wacom.com · 080-800-1231

Singapore

For more information please contact:

Wacom Singapore Pte. Ltd. · 5 Temasek Boulevard, #12-09, Suntec Tower Five,
Singapore 038985, Contactapbs@Wacom.com · (503) 525-3100

India

For more information please contact:

Wacom India Pvt. Ltd. · 426, Tower B, DLF Building Jasola District Centre,
Mathura Road, New Delhi 110025 India, Contactapbs@Wacom.com
Customer Support: 000-800-100-4159, +91-11-47239412

wacom.com/for-business

© 2025 Wacom Co., Ltd.