

Product Portfolio

# Software Solutions

*For Signature  
Capture &  
Verification*



WACOM® for Business

# Overview

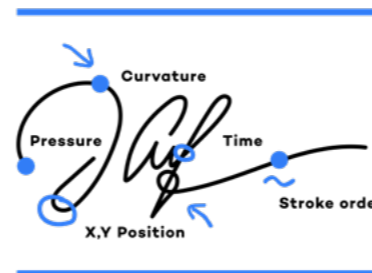
## Software Products

Explore the next generation of Wacom digital ink software is adding a completely new layer of value to organizational workflows that require electronic signatures and other handwritten input.



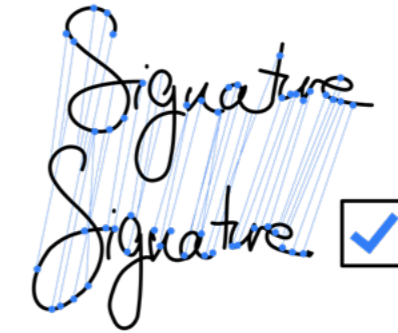
### Sign pro PDF APP and API

The easy way to integrate handwritten electronic signatures into document workflows.



### Wacom Ink SDK for Signature

Give developers the power to integrate handwritten signatures into on-premise or cloud applications



### Wacom Ink SDK for verification

Enable handwritten electronic signatures to be verified with up to 99% accuracy at the point of signing or after the fact.



### Wacom Ink SDK for Multi-Display

Enable front-desk staff and their customers to work on the same document via two different screens



# The sign pro PDF family

## *Signing PDF documents*

### Sign by hand, digitally

Within many organizations, important workflows can only be completed with a handwritten signature, captured using pen and paper. This slows down processes and adds costs, especially when working remotely. The sign pro PDF software family digitizes the capture of these handwritten signatures.

Sign pro PDF is a professional solution for adding handwritten signatures and text to PDF documents. It enables anyone to sign documents and complete forms with a digital pen, eliminating the need to print, scan and send paper documents. sign pro PDF is available as both an App and API for maximum versatility.



### sign pro PDF API

The easy way to integrate handwritten electronic signatures into document workflows.



### sign pro PDF App

A stand-alone app for adding handwritten electronic signatures to digital documents. Available in Standard and Premium version.

# Wacom Ink SDK for Signature

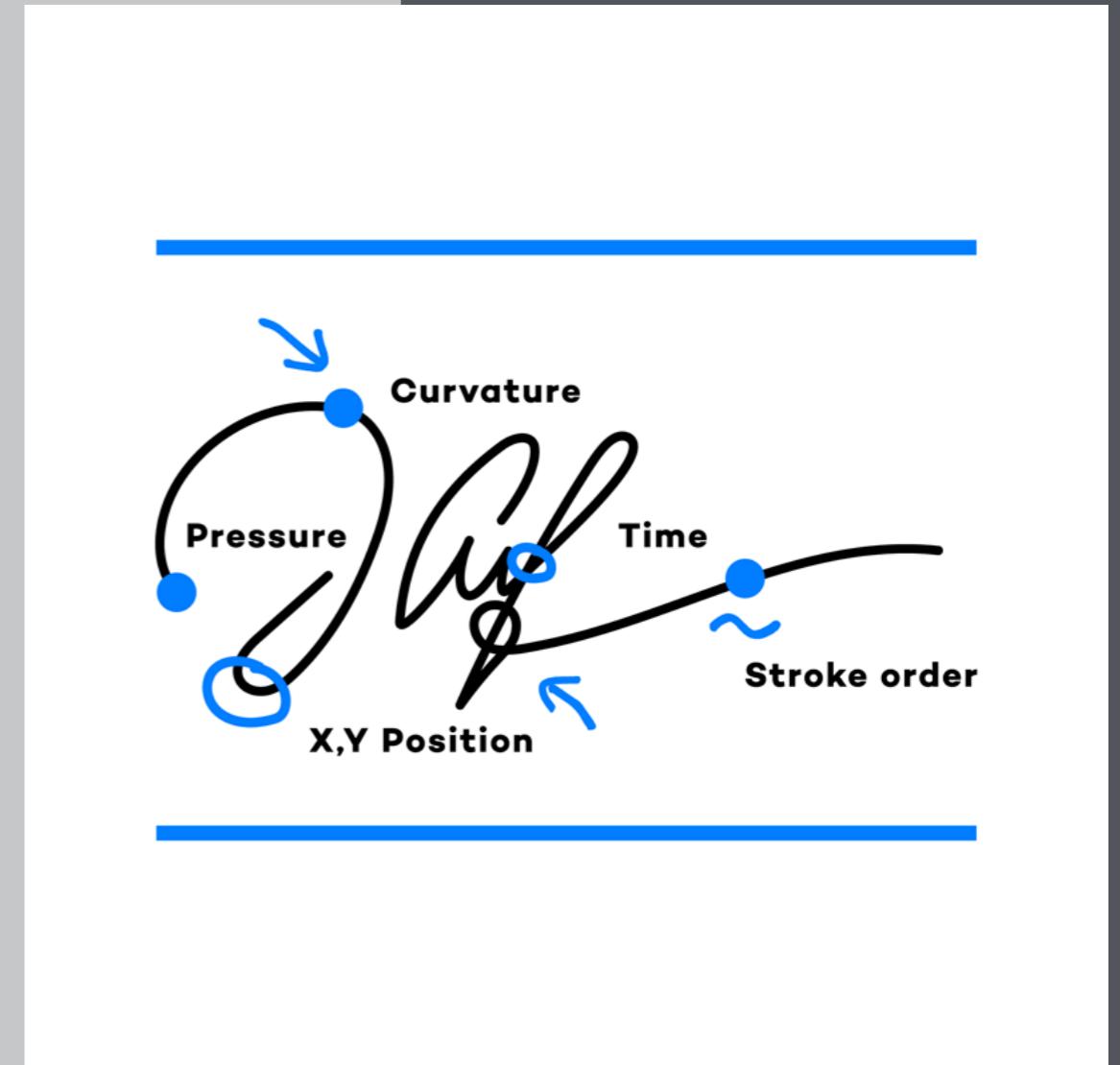
*Easy electronic signature integration*

The Wacom Ink SDK for signature allows solution providers to easily integrate support for capturing biometrically accurate handwritten electronic signatures on pen-enabled devices – both on-premises and on the web.

The Wacom Ink SDK for signature is compatible with most browsers including Chrome, Firefox and Edge. It also works with most operating systems including Windows, Android, iOS, Mac OS or Linux (via the JavaScript SDK component).

Server-side deployment is ideal for clients looking to scale their implementations quickly and easily across locations, device types and operating systems.

The SDK's basic functionality is available for free to use with Wacom devices running Windows. The paid, licensed version of the SDK includes enhanced features and can be used to enable Wacom digital ink on third-party devices running Windows, iOS and Android.



wacom®  
Ink SDK for signature

# Wacom Ink SDK for Multi-Display

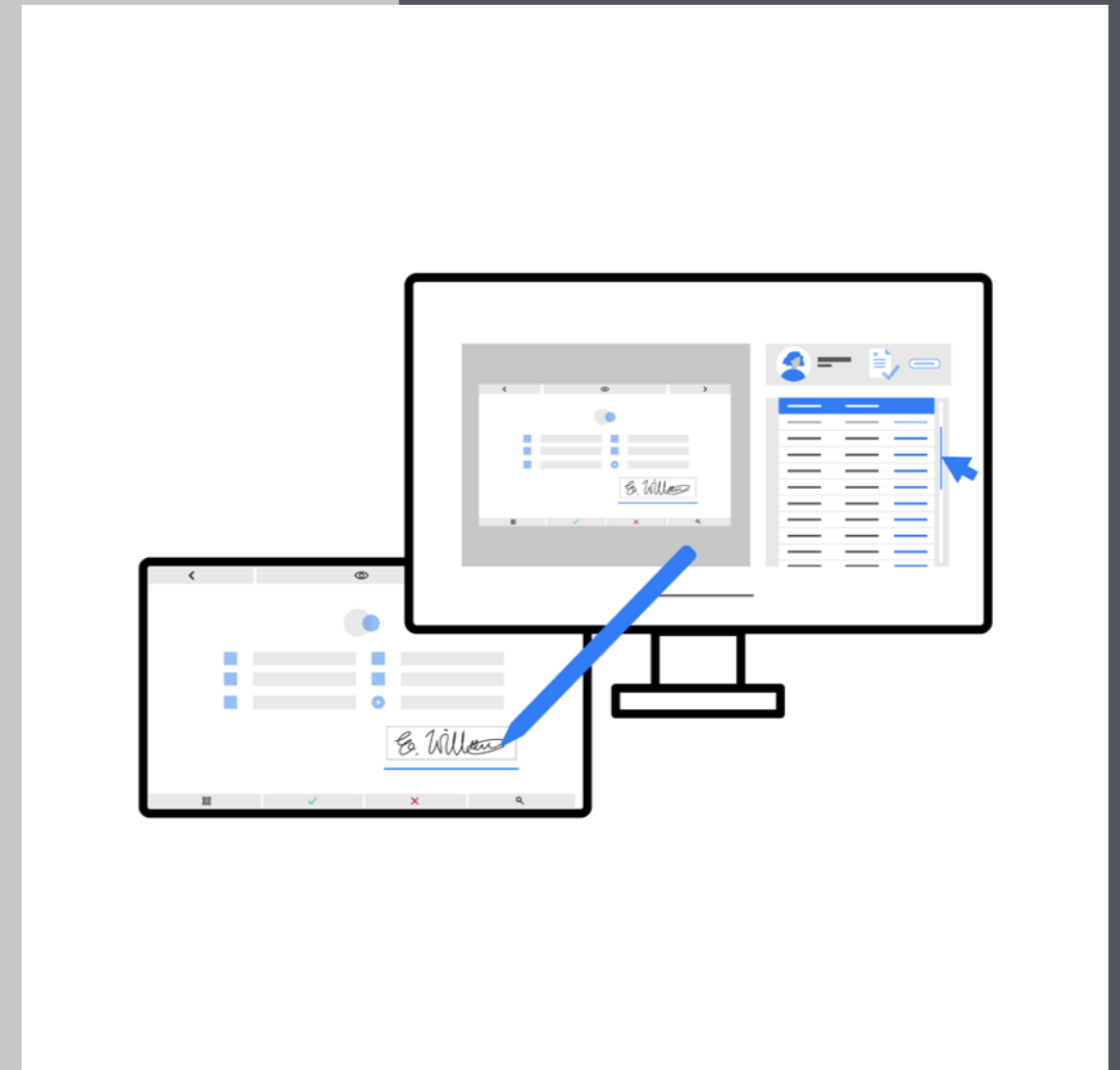
## *Managing eSignatures at the Counter*

Front-desk employees in many industries need to work with customers on documents simultaneously. Wacom Ink SDK for multi-display enables this with maximum efficiency, privacy, and security.

The SDK enables documents to be viewed simultaneously on a computer and a Wacom pen display, without sharing mouse control. This allows customers to engage with documents and information independently, without impacting the employee's inputs. Customers can view, annotate, and sign documents with a digital pen or by touch, depending on the device.

Plus, customers have access to privacy mode which overrides limits the employee's visibility when entering personal details such as passwords.

Ideal for use in high traffic areas like hotel reception, doctor's offices, government services and banking.



wacom®  
Ink SDK for multi-display

# Wacom Ink SDK for Verification

*eSignatures you can trust*

Wacom Ink SDK for verification provides a fast, reliable way to verify signatures in customer-facing environments, or flag suspicious signatures after the fact during daily risk management processes.

The SDK's verification engine enables signatures to be verified in two ways.

- Dynamic verification of a signature by comparison with 3-12 reference signatures
- Static verification after the fact by comparing images of a recent signature with images of known recent examples.

The SDK is the only solution that enables both types of verification within a single product and is compatible with any Wacom or 3rd party device that generates handwritten eSignatures using Wacom Ink SDK for signature.

## TYPICAL USE CASES

### Financial Services

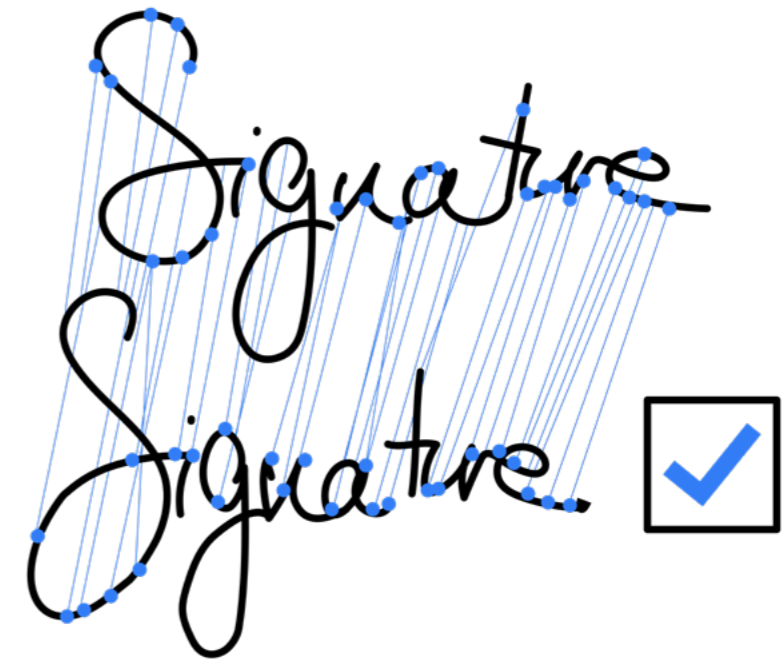
Verifying identities for significant transactions such as mortgage contracts or large cash withdrawals.

### Public Sector

Preventing election fraud by verifying that postal votes in an election have been completed by eligible citizens.

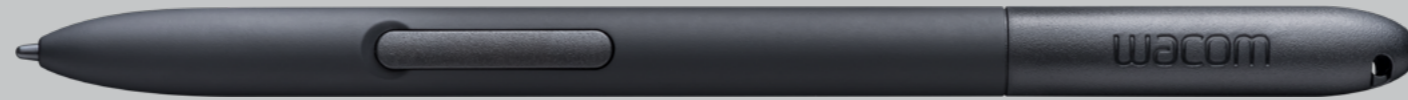
### Healthcare

Protecting the authority of senior medical staff to approve specific procedures or medications.



wacom®  
Ink SDK for verification

# More human



# More digital



## Japan (HQ)

For more information please contact:

Wacom Co., Ltd. · Sumitomo Fudosan Shinjuku Grand Tower 31F, 35F,  
8-17-1 Nishi-Shinjuku, Shinjuku-ku, Tokyo 160-6131, Japan  
vm-info@wacom.co.jp · 03-5337-6706



## Americas

For more information please contact / Pour de plus amples informations,  
veuillez contactez / Para obtener información adicional, póngase en contacto  
con: Wacom Technology Corporation · 12121 NE 99th Street, Suite 2140,  
Vancouver, WA 98682 USA  
esign@wacom.com · 1-503-525-3100



## Europe, Middle East and Africa

For more information please contact / Pour de plus amples informations,  
veuillez contactez / Para obtener información adicional, póngase en contacto  
con: Wacom Europe GmbH · Zollhof 11-15, 40221 Düsseldorf, Germany  
solutions@wacom.eu · +49 211 385 48 0



## China (Mainland)

For more information please contact:

Wacom China Corporation · 518, West Wing Office, China World Trade Center,  
No. 1 Jianguomenwai Avenue, Chaoyang District, Beijing 100004, China  
WW@wacom.com · 400-810-5460

## Hong Kong

For more information please contact:

Wacom Hong Kong Ltd. · Office 107G, 17/F, Tower I, Grand Century Place,  
193 Prince Edward Road West, Mong Kok, Hong Kong, China  
e-signature@wacom.com · +852 2573 9322



## Australia

For more information please contact:

Wacom Australia Pty. Ltd. · Ground floor, Building 1, 3 Richardson Place,  
North Ryde, NSW, 2113, Australia  
Contactapbs@Wacom.com · +61 2 9422 6730

## Korea

For more information please contact:

Wacom Korea Co., Ltd. · Rm #1211, 12F, KGIT Sangam Center, 402 Worldcup  
Bukro, Mapo-gu, Seoul 03925, Korea  
Contactapbs@Wacom.com · 080-800-1231

## Singapore

For more information please contact:

Wacom Singapore Pte. Ltd. · 5 Temasek Boulevard, #12-09, Suntec Tower Five,  
Singapore 038985, Contactapbs@Wacom.com · (503) 525-3100

## India

For more information please contact:

Wacom India Pvt. Ltd. · 426, Tower B, DLF Building Jasola District Centre,  
Mathura Road, New Delhi 110025 India, Contactapbs@Wacom.com  
Customer Support: 000-800-100-4159, +91-11-47239412

[wacom.com/for-business](https://wacom.com/for-business)

© 2025 Wacom Co., Ltd.